

826-2219 GSMS Ground Wiring Harness Kit

Intermittent electrical problems in gas pasta cookers can be attributable to loose or faulty grounds. This kit consolidates the many ground points in the controller box of the unit with one ground lug, which incorporates the safety ground from the power cord. An additional ground for the burner is added to an existing stud below the controller box.

In This Kit		
Part No.	Description	Qty
106-6129	Harness, ground	1
809-0123	Screw, 10-32x3/4	1
809-0256	Nut, keps 10-32	4
819-6175	Instructions	1

Follow these instructions to install the new ground wiring harness.

Remove power from the unit and remove the controller.

Trace ground wires from their attachment point in the control box to their source and remove. See figure 1. NOTE: Leave the solenoid and the computer chassis ground wire in place.

Remove the ground wire connecting the igniter to the control box. It is not replaced. See figure 2.

Remove the top cap.

Remove the computer frame.

Drill a 3/16th hole in the bottom of the control box to locate the new ground lug. See figure 4.

Position provided ground lug in the control box and secure with nuts.

Route the safety ground from the power cable to the new ground lug.

Position the provided ground harness and route as shown in figures 3 and 4.

Secure the ground harness with the provided wire ties.

Secure the ground on the frypot stud with an additional nut. Leave the original nut in place. See figure 2.

Reassemble the unit, return power and test operation.

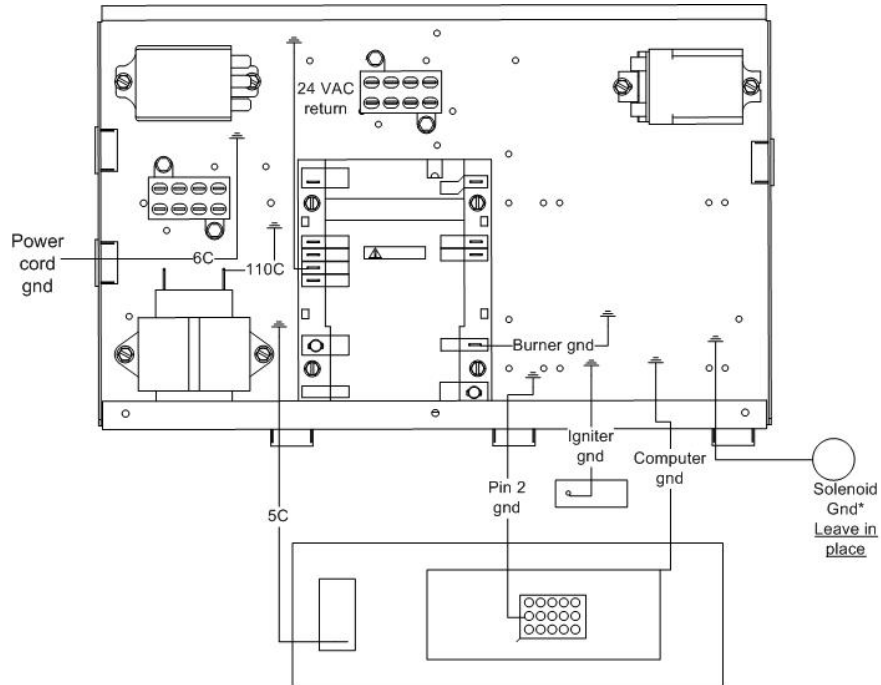


Figure 1: The existing ground wires are removed except for the solenoid and the computer chassis ground.



Figure 2: The burner ground on the module is grounded to the new ground stud and an existing fry pot stud (see arrow).

826-2219 GSMS Ground Wiring Harness Kit

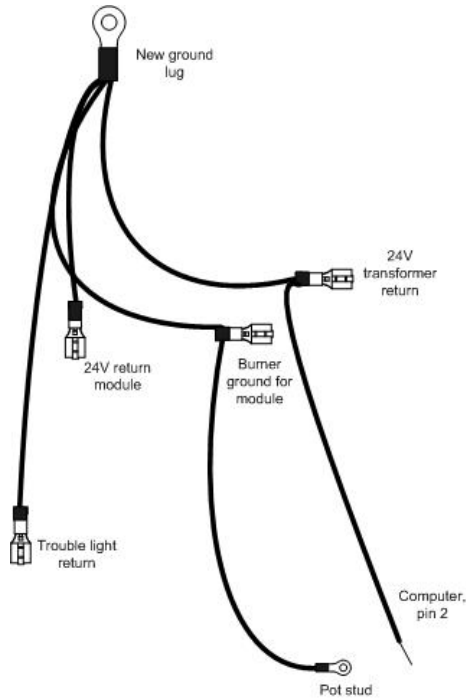


Figure 3: The new harness consolidates the grounds in the control box. The safety ground from the power cord (not shown here) is added to the new ground lug.

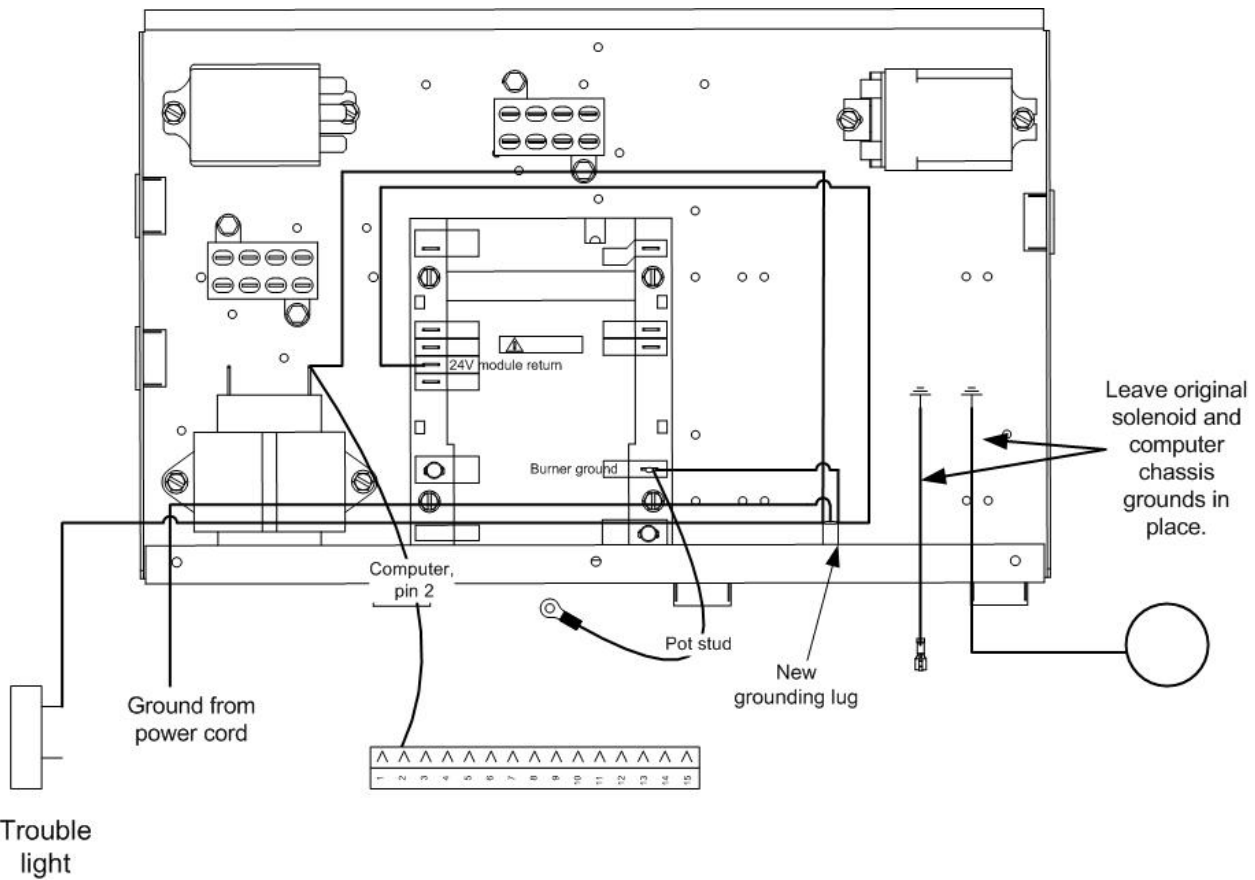


Figure 4: Ground harness routing